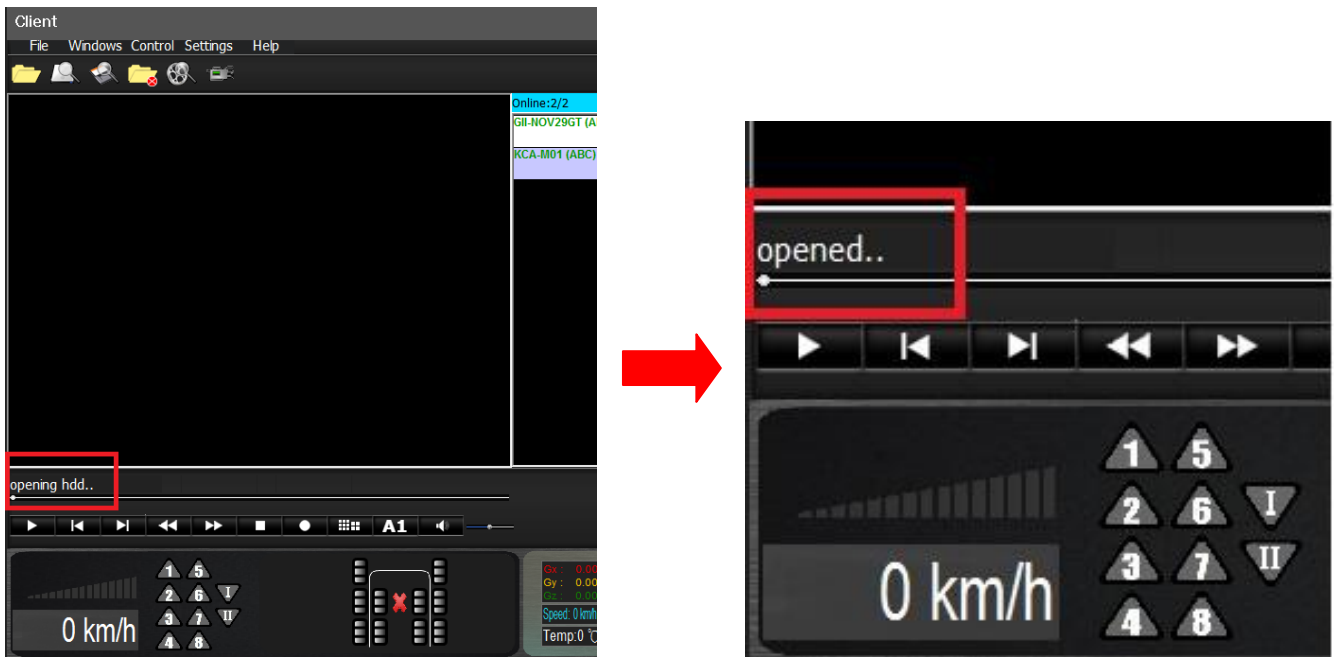


# QIG : Find and Play

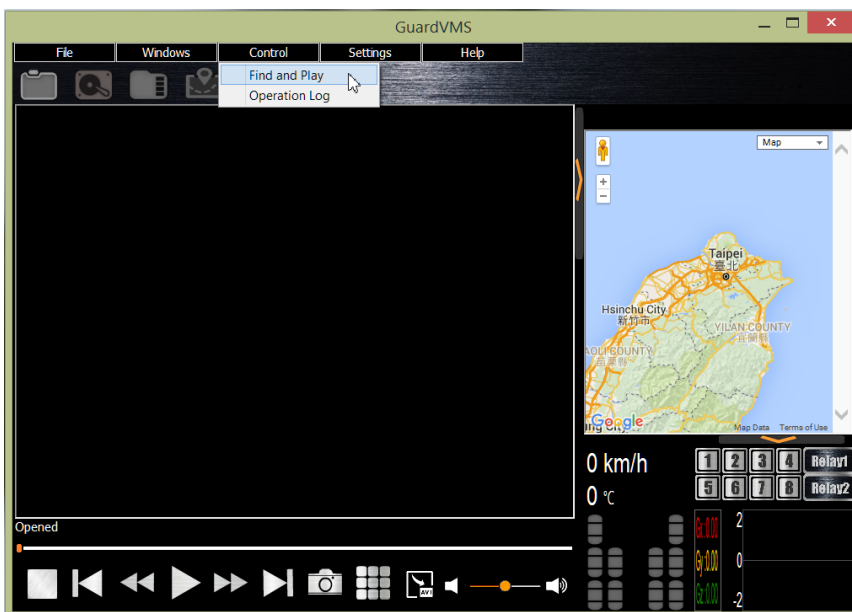
The function had help user to execute playback by time search 、Event search 、Quick search.

(1) Step1: Open file or execute search HDD 、 search SD.

(2) Step2: Waiting for status that change to opened...



(3) Step 3: Select Control /Find and play.



(4) Step 4: Select Event Index and Click list with selected item.

The screenshot shows a software interface titled 'Client' with a menu bar (File, Windows, Control, Set) and a toolbar. The main window has three tabs: 'Time Index', 'Event Index' (selected), and 'Quick Index'. Below the tabs is a table with three columns: 'Time', 'Position', and 'Status'. A red rectangular box highlights the 'Status' column. Below the table is a playback control bar with various icons and a 'A1' label. At the bottom of the interface is a control panel with a speedometer showing '0 km/h', a numeric keypad (1-8), a directional pad, and a sensor data display showing 'Gx: 0.00', 'Gy: 0.00', 'Gz: 0.00', 'Speed: 0 km/h', and 'Temp: 0 °C'.

Time	Position	Status
2016/12/21 10:15:46	583642411008	CH022 VIDEO LOSS
2016/12/21 10:18:00	583774831104	CH021 VIDEO LOSS
2016/12/21 10:18:33	583808468480	RECORD RESOLUTION CHANGE
2016/12/21 10:25:45	584513027072	CH022 VIDEO LOSS
2016/12/21 10:26:19	584564889600	CH021 VIDEO LOSS
2016/12/21 10:26:43	584596650496	CH027 VIDEO LOSS
2016/12/21 10:27:00	584616376320	CH027 VIDEO LOSS
2016/12/21 10:27:39	584660485120	CH028 VIDEO LOSS
2016/12/26 15:56:36	998464525312	POWER ON
2016/12/26 16:08:34	999026741248	STORAGE FORMAT
2016/12/26 16:15:30	999050475520	POWER ON